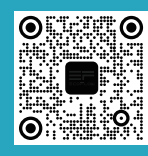


# ECOFLOW

## QUICK START GUIDE

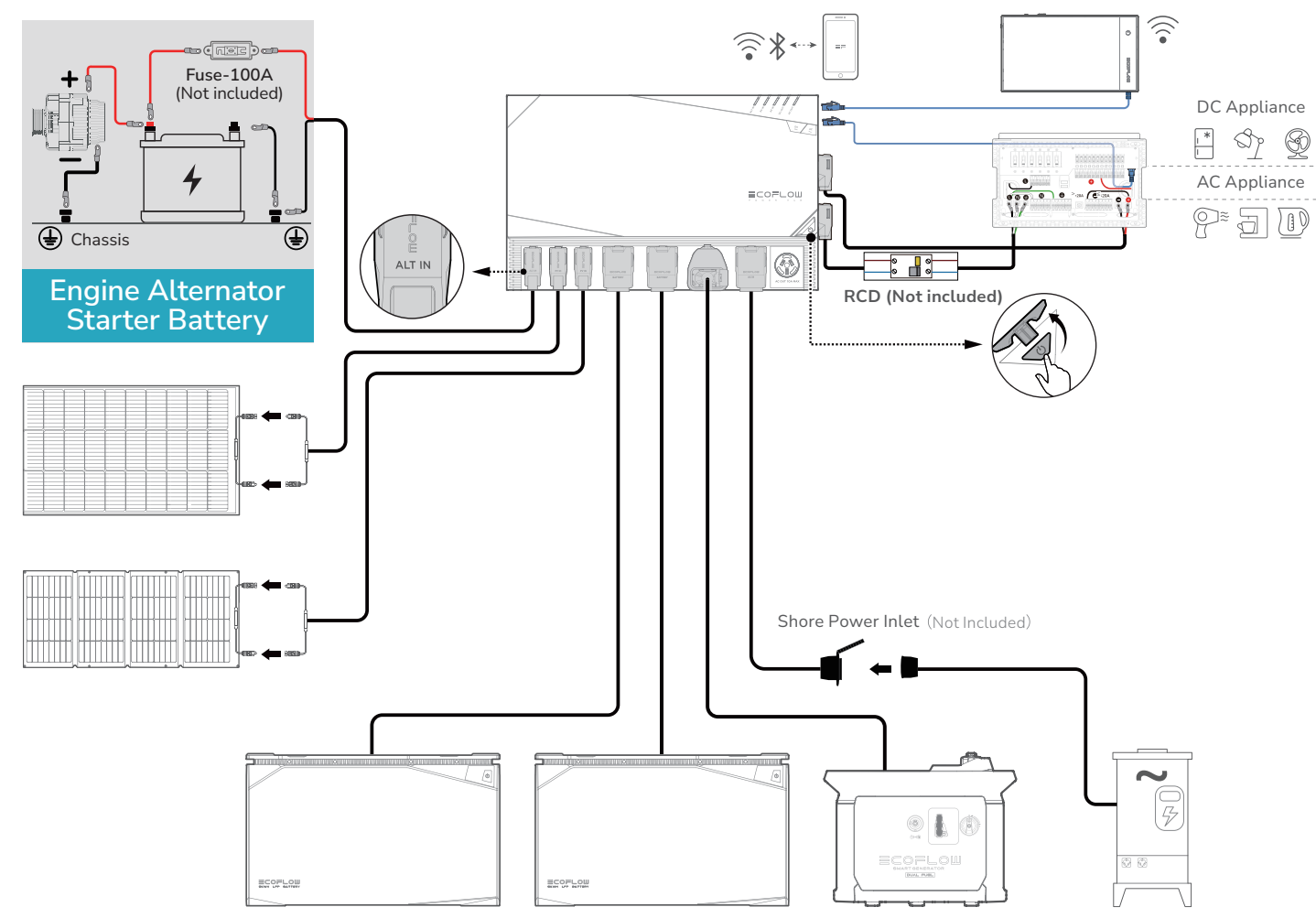


For details, please scan the QR code or visit <https://www.ecoflow.com/support/download/power-kits>

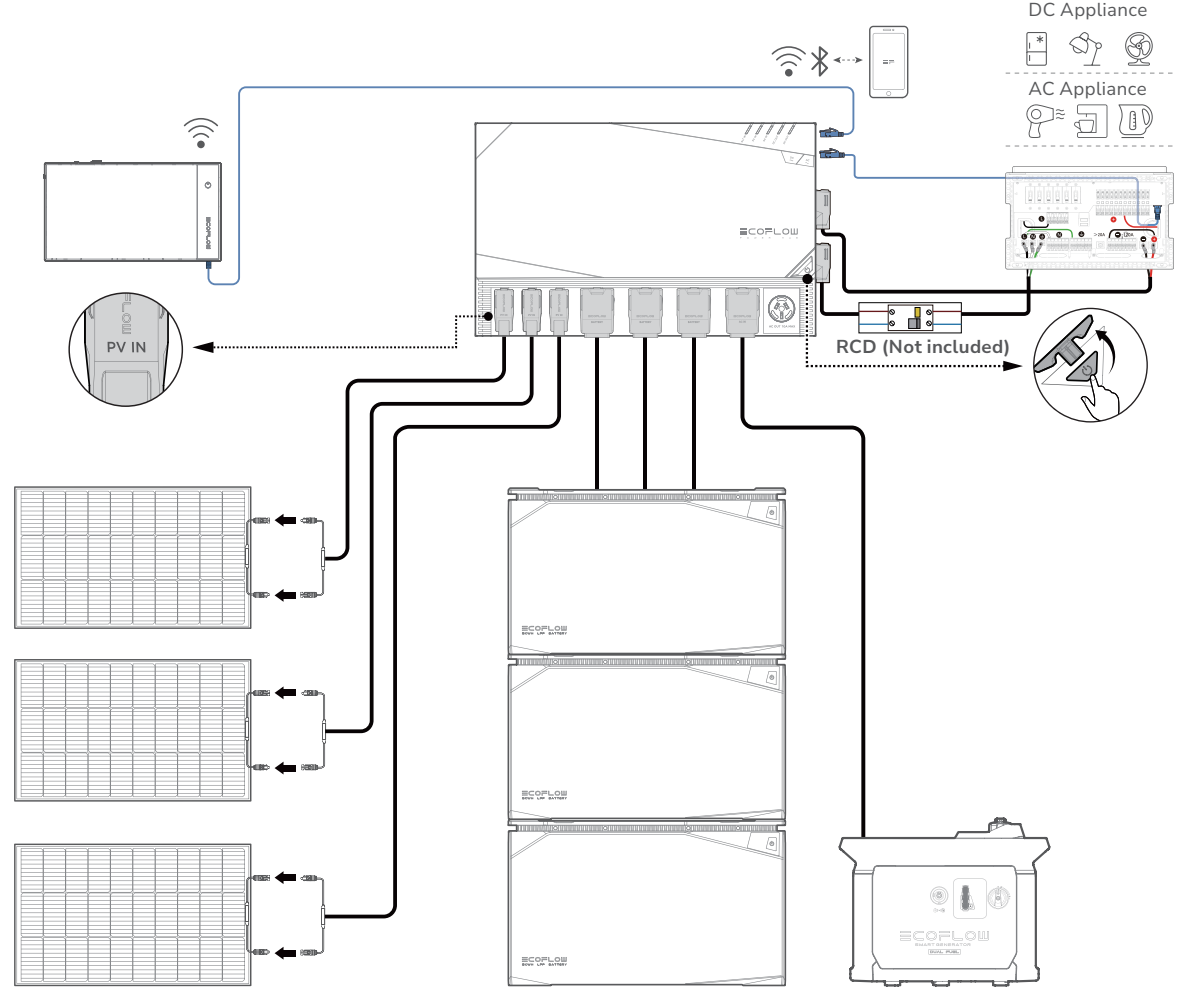


Raccolta carta

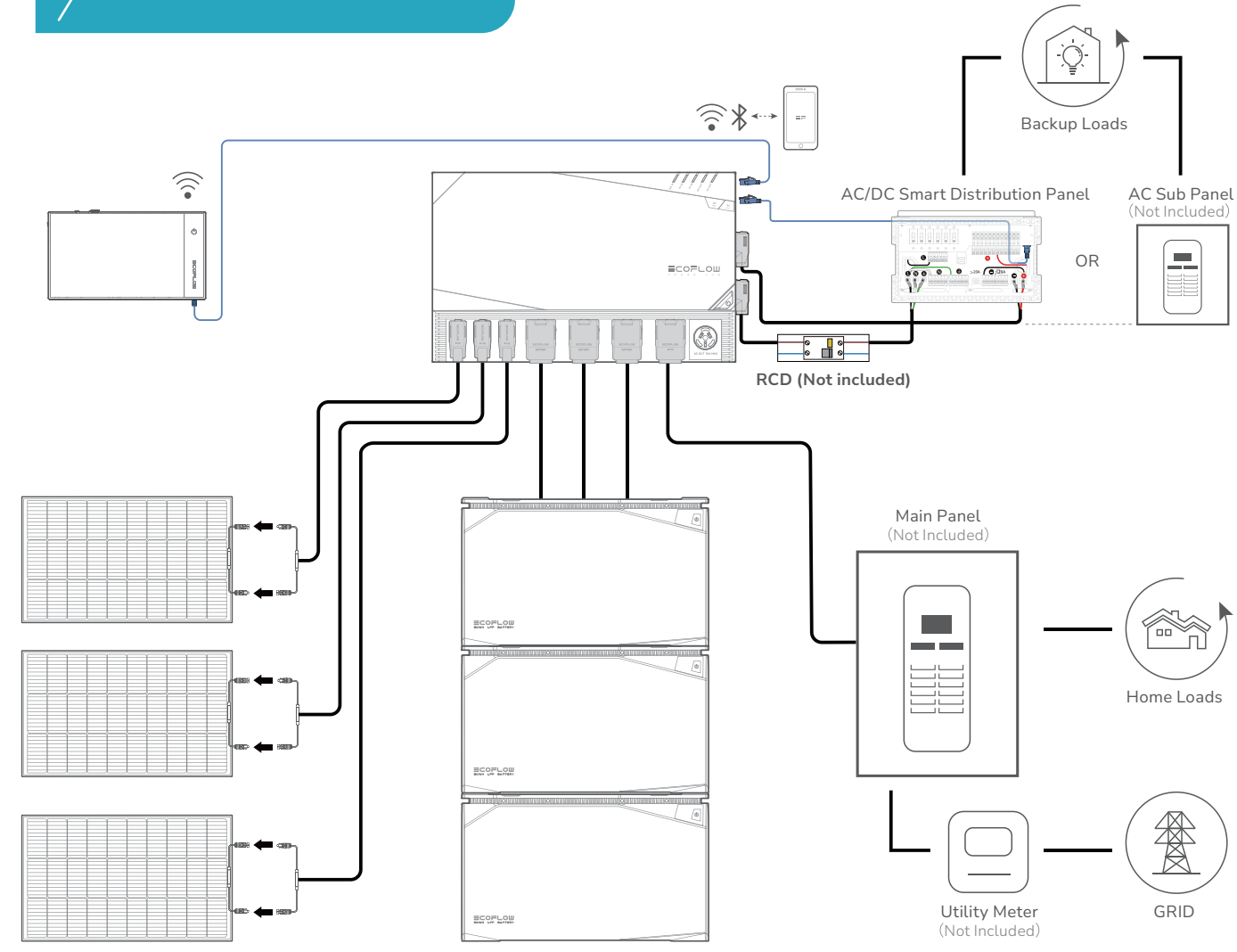
### Recreational Vehicle (RV)



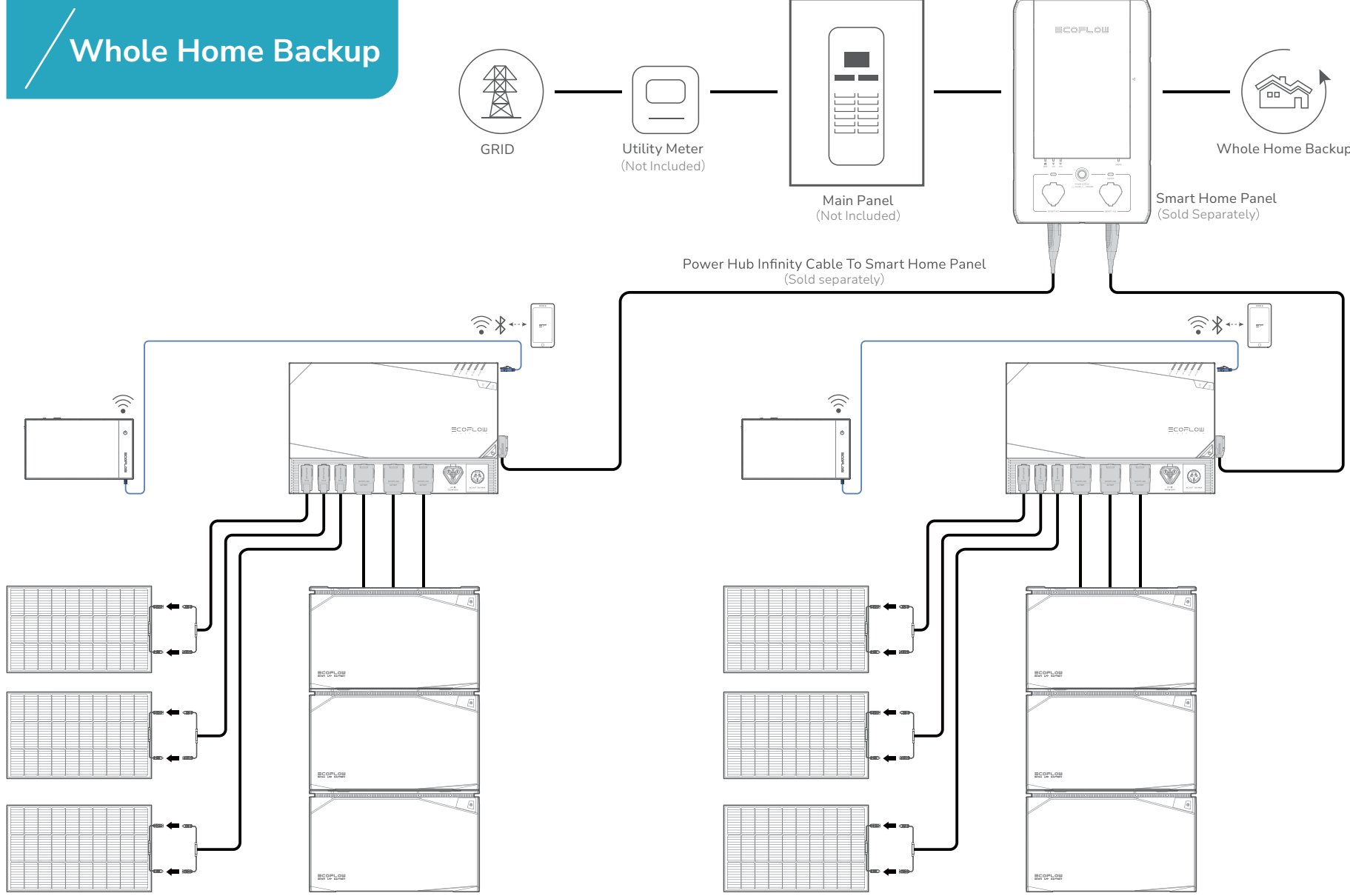
### Off Grid Builds / Self Consumption



### Partial Home Backup

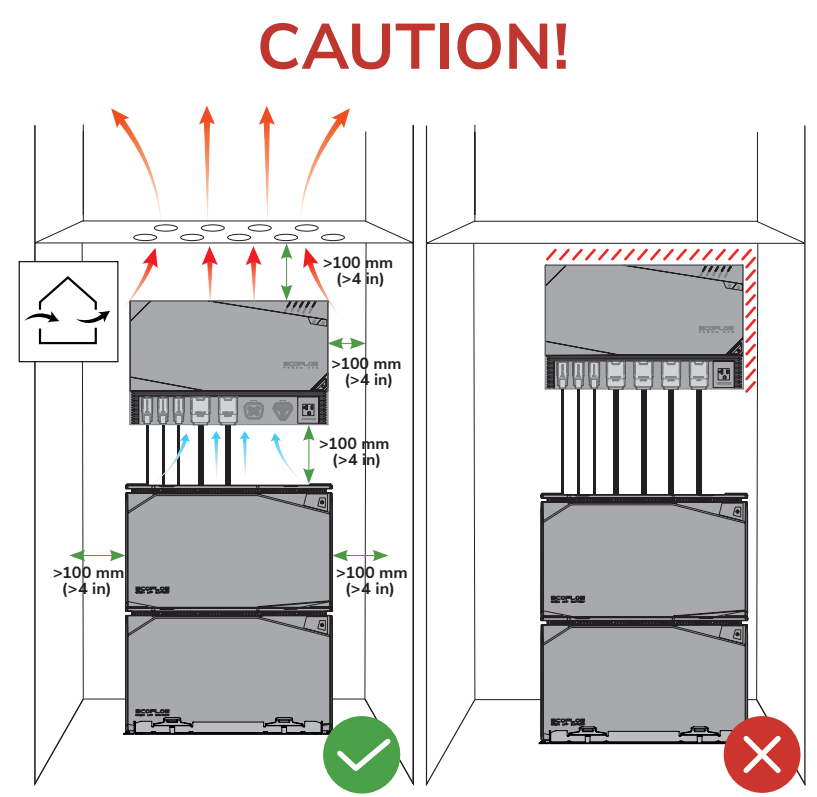


### Whole Home Backup

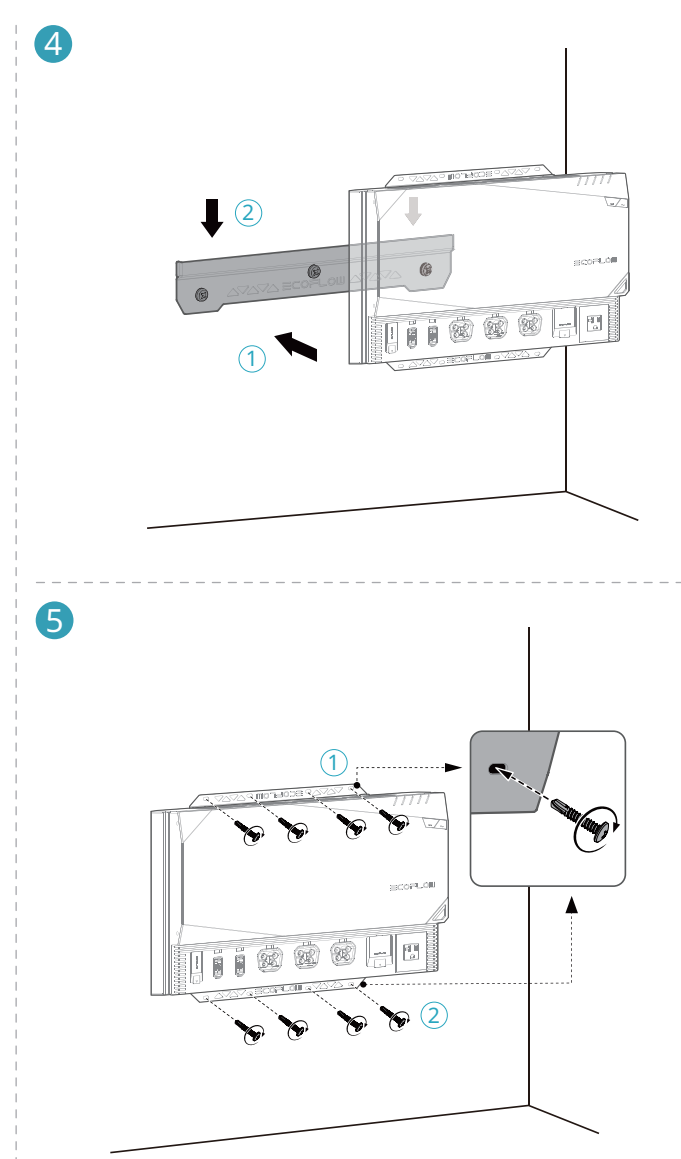
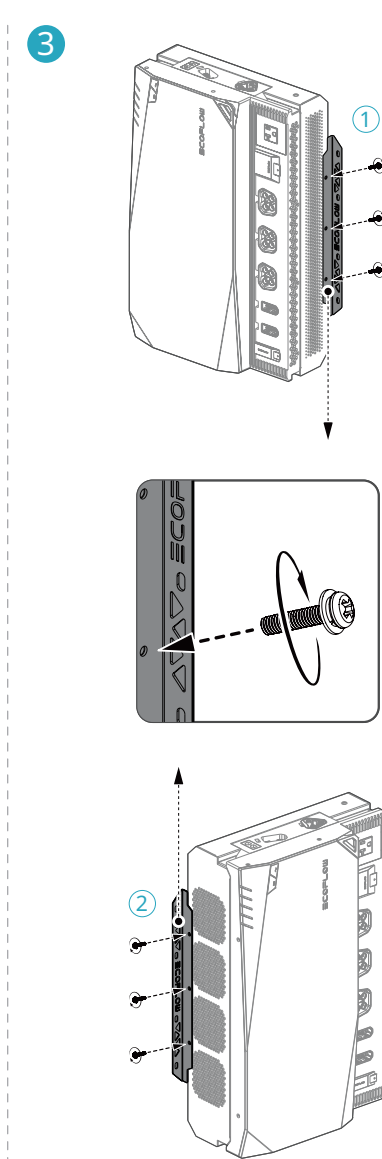
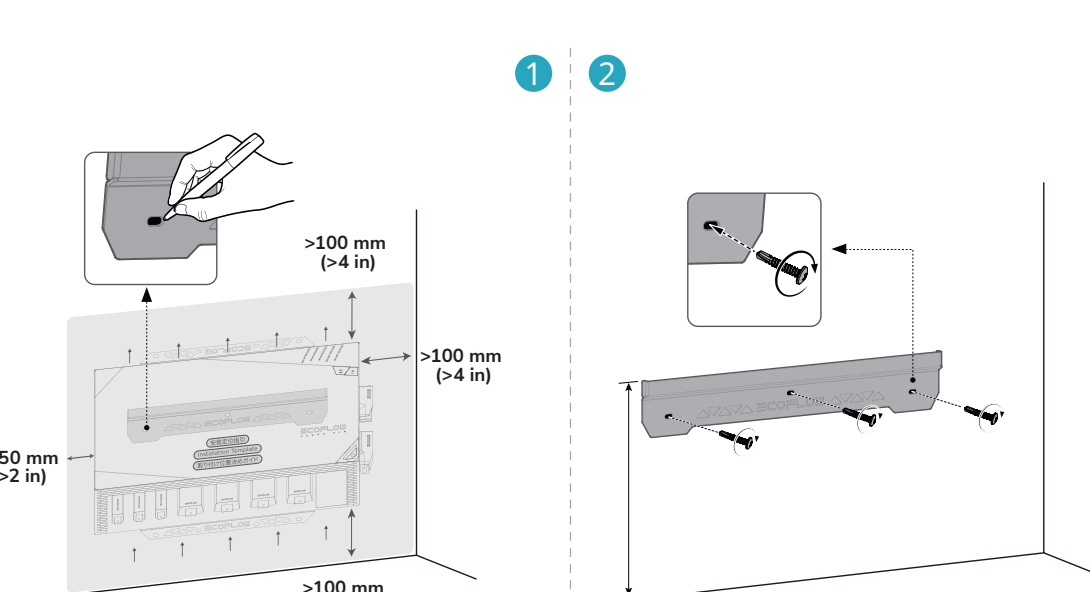
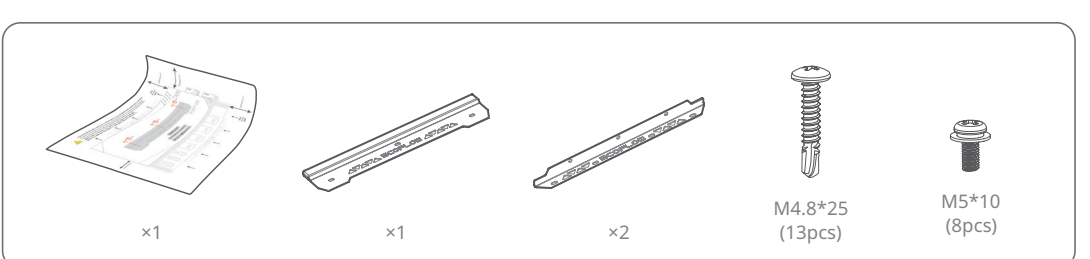


### 1 / Power Hub

**CAUTION!** Ventilation is a MUST to prevent the Power Hub from overheating.

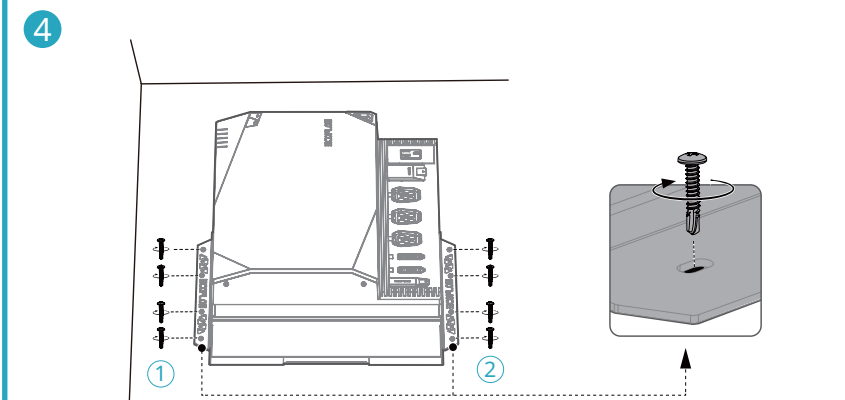
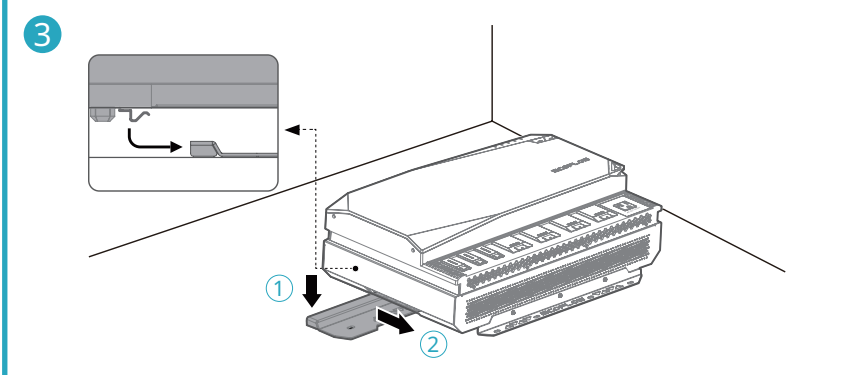
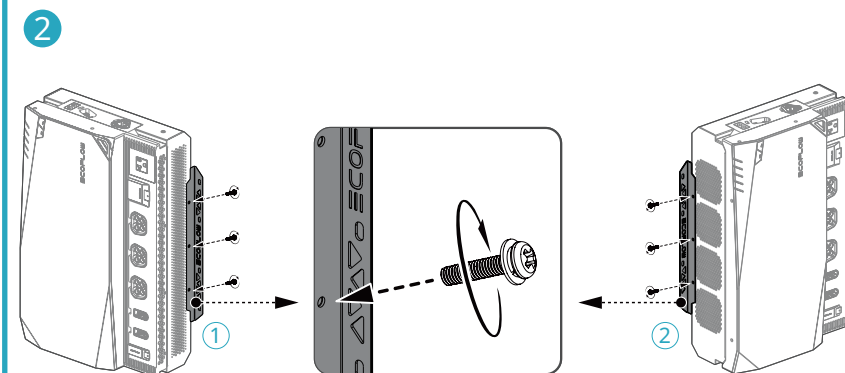
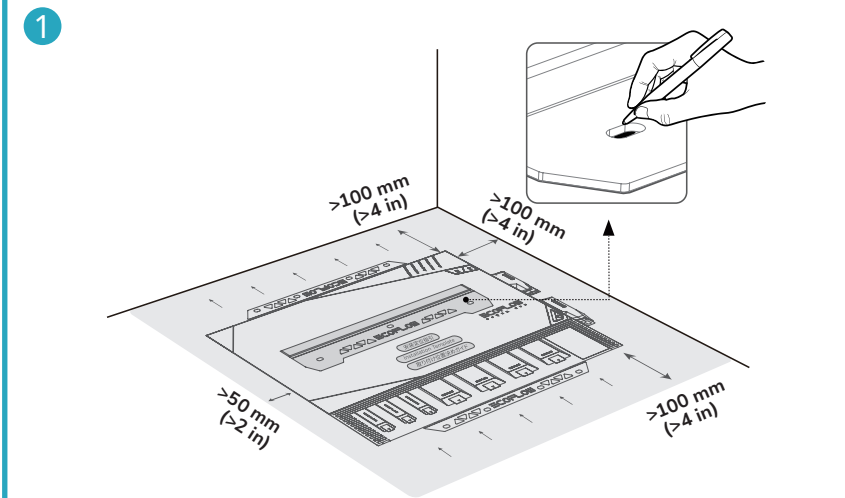
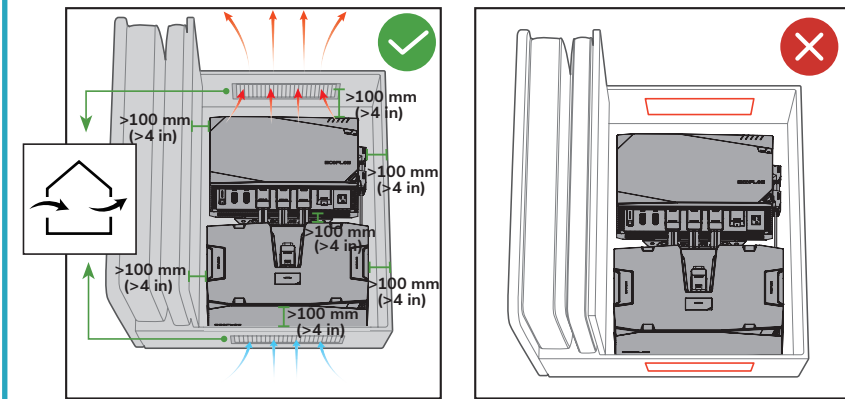


### Wall Mounting

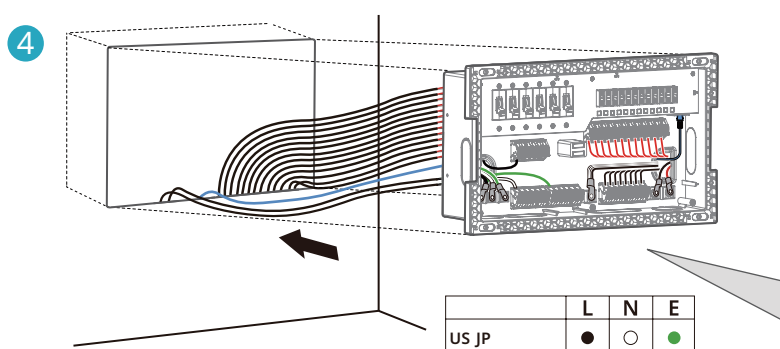
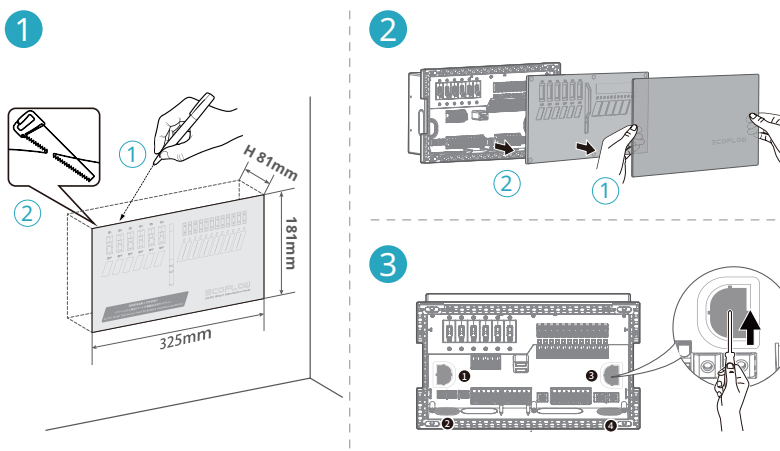
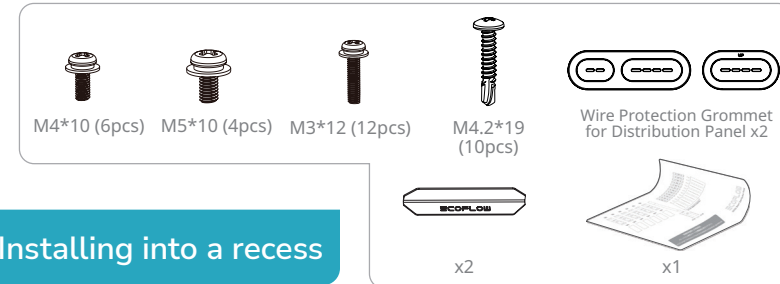




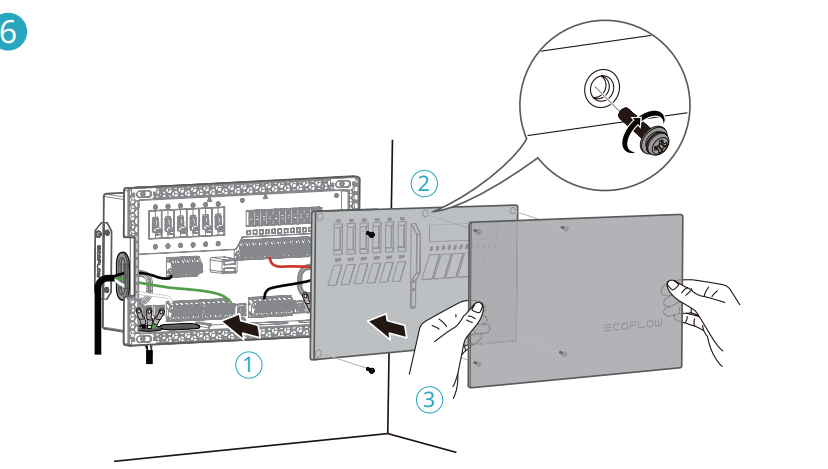
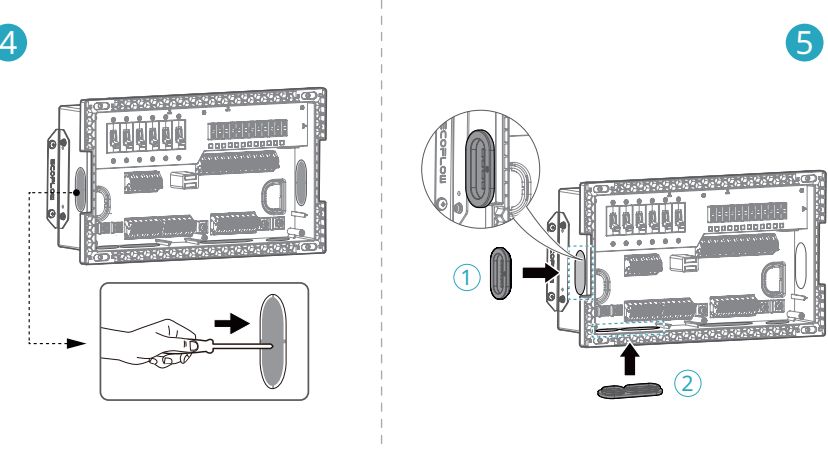
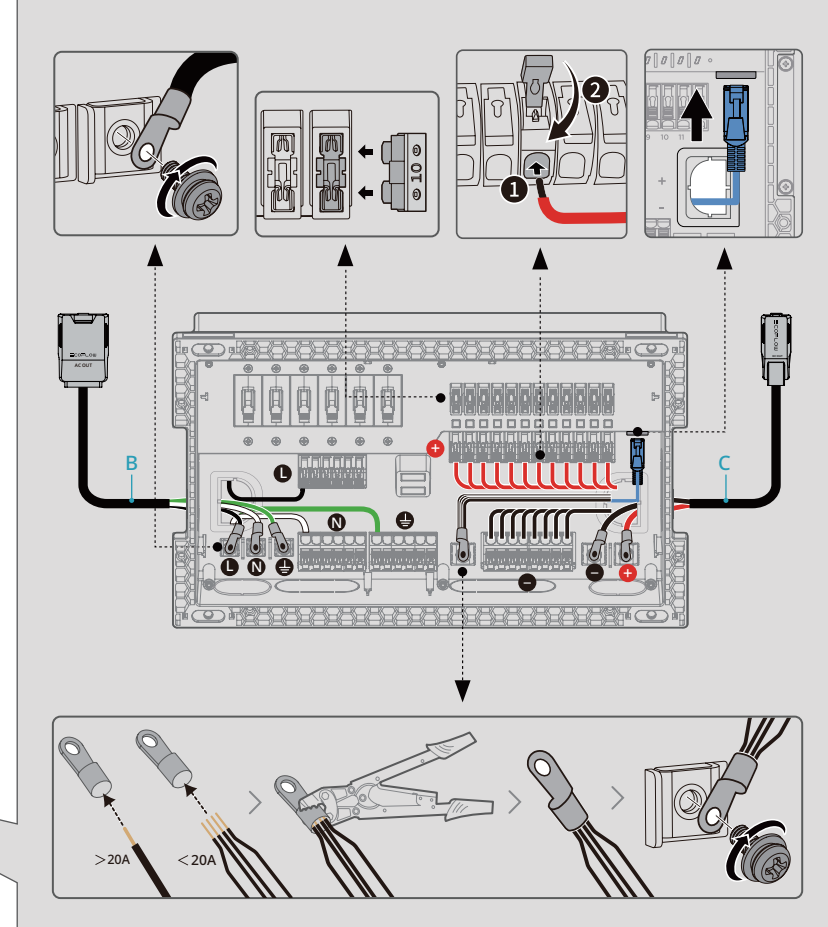
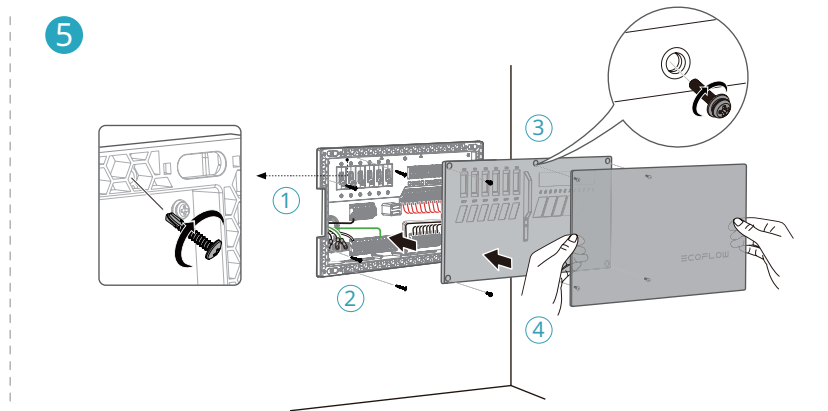
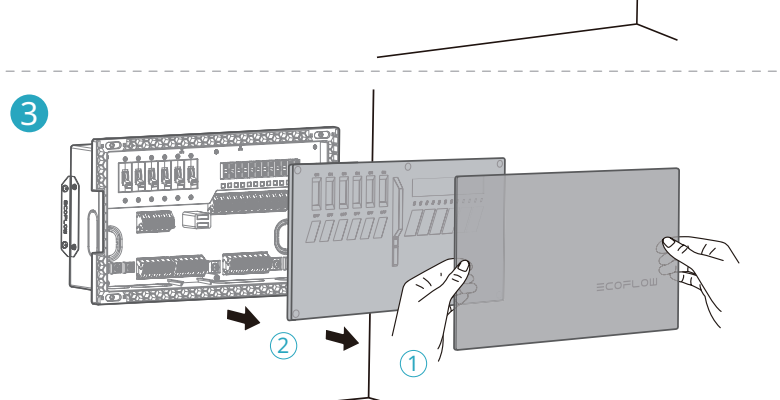
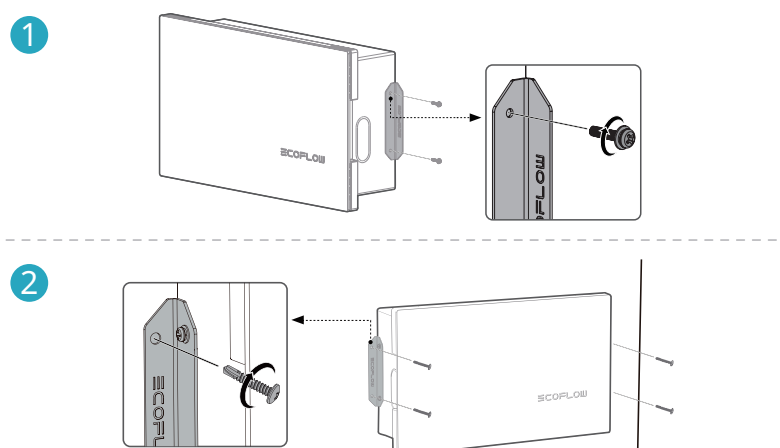
## CAUTION!



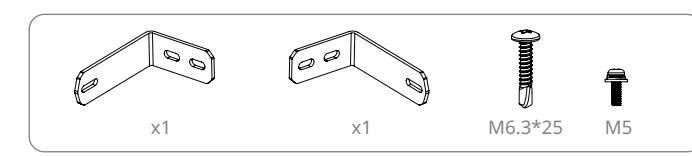
## 2 / AC/DC Smart Distribution Panel



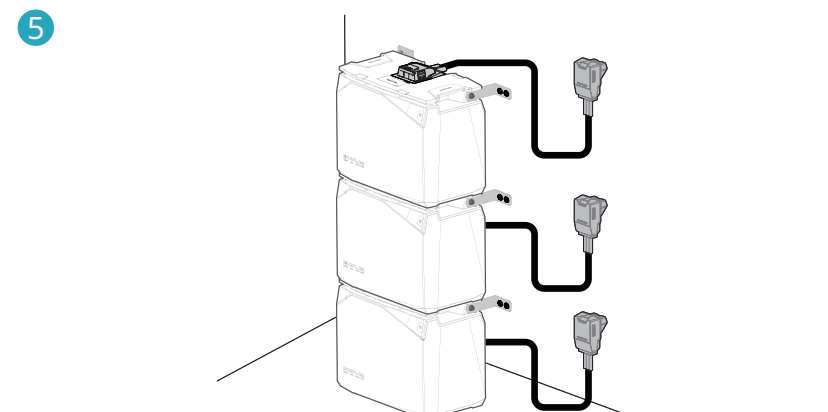
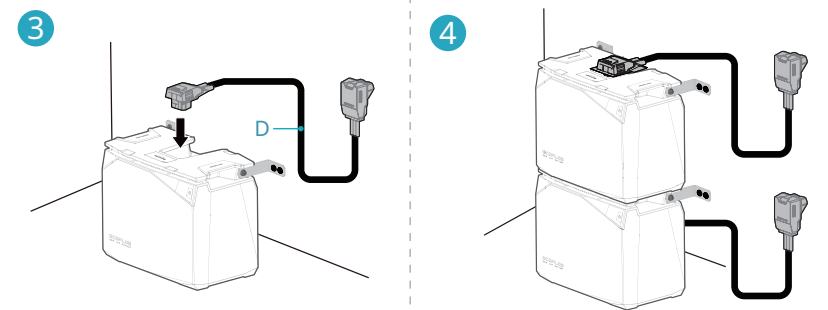
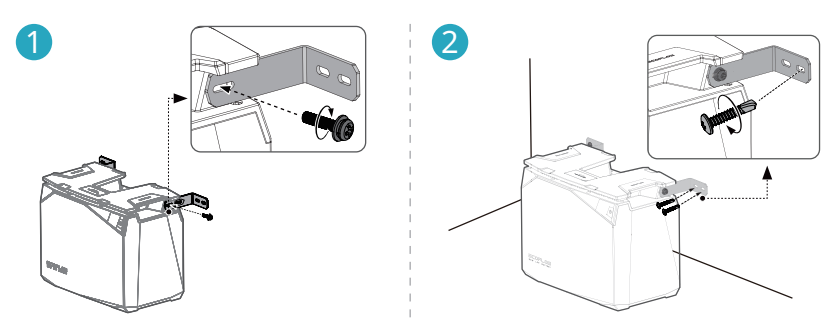
## Wall Mounting



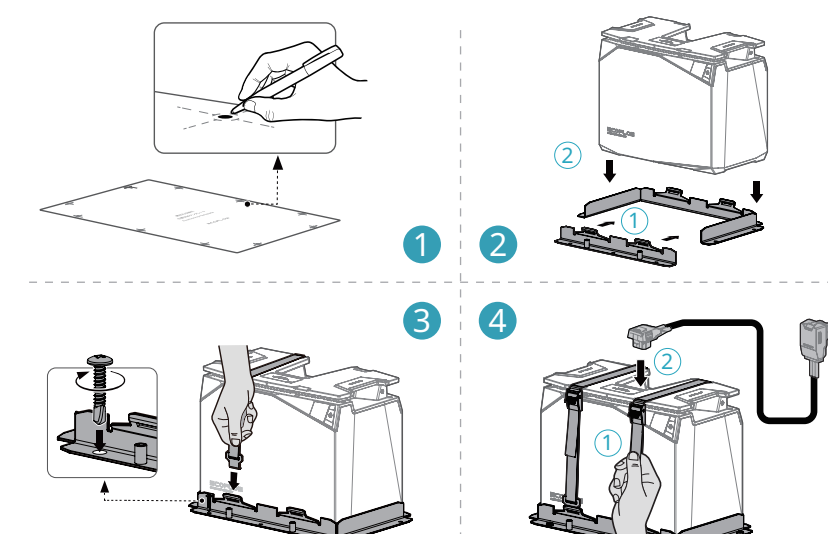
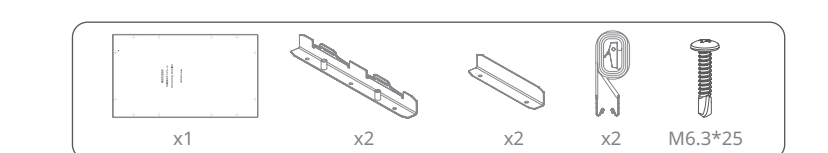
### 3 / 2KWh / 5KWh LFP Battery



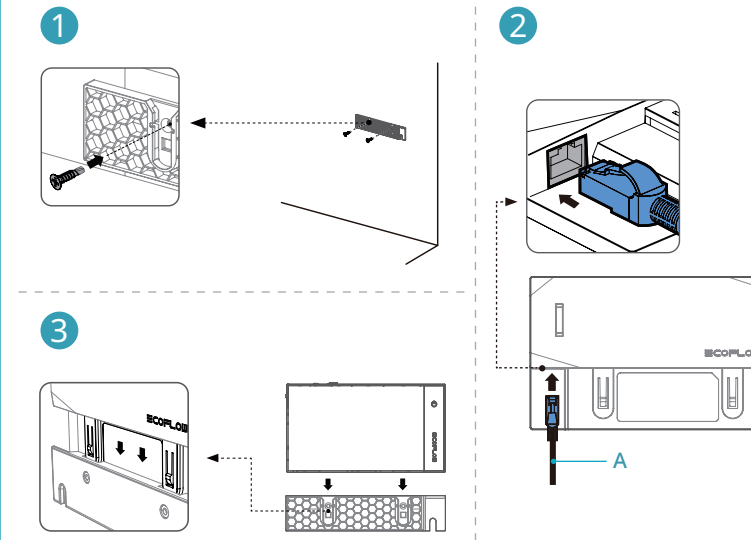
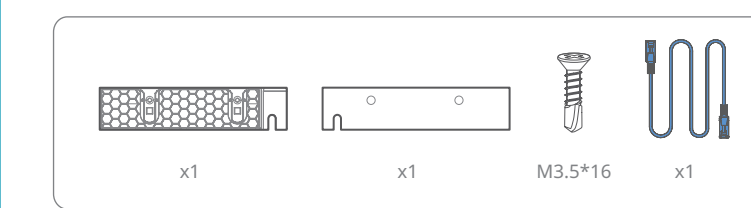
## Stacking Installation



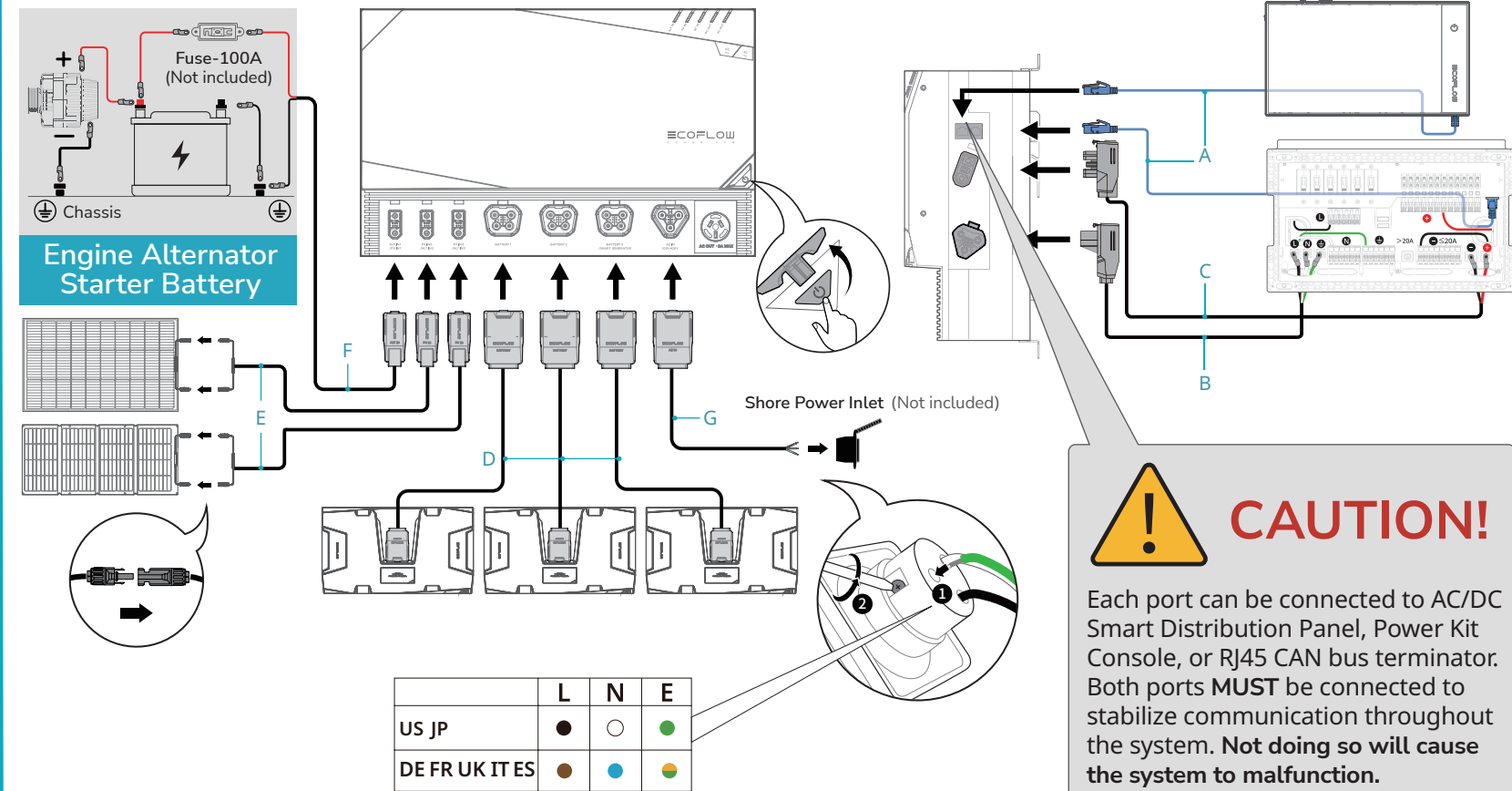
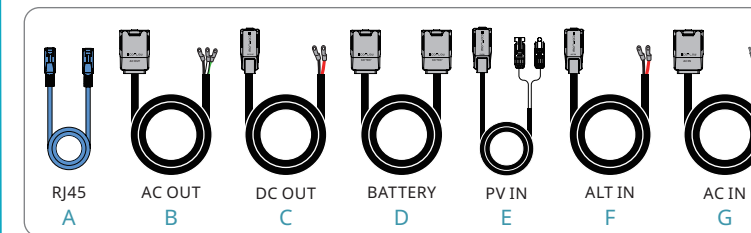
## Surface Mounting



## 4 / Power Kit Console



## 5 / Connecting Components



## 6 / EcoFlow App

